

ARBIL RAIL EQUIPMENT



Stay on Track

Table of Contents

■	Section 1	Track Jacks	3-6
■	Section 2	Jacking Equipment	7-8
■	Section 3	Re-Railing Equipment	9
■	Section 4	Workshop Hydraulics	10
■	Section 5	Track Tools - Manual	11-15
■	Section 6	Clip Fastening Tools	16-18
■	Section 7	Railband Rail Saws	19-20
■	Section 8	Matweld Hydraulic Rail Tools	21-22
■	Section 9	Track Tools - Powered	23-24
■	Section 10	Small Plant	25
■	Section 11	De-Stressing Equipment	26
■	Section 12	Overhead Line Equipment	27-30
■	Section 13	Rail Handling Equipment	31-34
■	Section 14	Sleeper Handling Equipment	35-37
■	Section 15	Lifting & Shifting	38-39



Over the last 4 decades, Arbil Rail Centres have produced a range of products that have

been designed and manufactured to be the toughest and most durable available.

Product enhancement is an ongoing process and new lines are continually being added.

The vast majority of the products illustrated in this catalogue are available for both sales and hire.

Furthermore, as part of the Raymond Bills Group, Arbil

have been servicing rail equipment for almost 40 years.

That sort of experience, combined with an unrivaled stock holding of spare parts, historical records and technical information enables us to continue to maintain aging product lines, not simply the current models that we sell. So whether it's sales, hire or service, Arbil Rail Centres continue to offer - the complete solution.



Australian owned and operated, LB Wire Ropes was established in 1962 as a rigging workshop.

LB Wire Ropes has increased its product offering since the 60s and now sells a wide variety of lifting and lashing, materials handling and personal protective equipment as well as onsite installation, maintenance and inspection, testing and repair work.

LB Wire Ropes has a strong history in working with rail maintenance and service providers. Our Camlok rail handling clamps are complemented with Arbil's range of rail equipment.

LB Wire Ropes is the Australian distributor for Arbil Rail Equipment.

Section 1 Hydraulic Track Jacks



Cat No. 39/37252
RB/BR/037

Kenhi® Toe Jack - Type B Model 805BR

Supplied with an overload safety valve and tested to 25% over the rated capacity. The jack is obstructionless for rails of 42kg/m and over, and can be placed under the rail without removal or ballast.

● Safe working load:	8t on head 5t on toe
● Closed height	235mm head 95mm toe
● Toe to head	140mm
● Lifting stroke	90mm
● Weight of Jack	18.5kg
● Weight of standard Lever	3.2kg
● Weight of Insulated Lever	2.5kg



Cat No. 39/37255
RB/BR/038

Kenhi® Toe Jack - Type C Model F1527

Supplied with an overload safety valve and tested to 25% over the rated capacity. Designed for use on switches and crossings, this heavy duty jack is obstructionless for rails 42kg/m and over.

● Safe working load	20t on head 15t on toe
● Closed height	343mm head 191mm toe
● Toe to head	152mm
● Lifting stroke	110mm
● Weight of Jack	36kg
● Weight standard Lever	3.2kg
● Weight of Insulated Lever	2.5kg



Cat No. 39/37260
RB/BR/039

Kenhi® Pan Jack - Type D Model F1054

This obstructionless jack is fitted with an overload safety valve and tested to 25% over the rated capacity.

The jack is placed under the rail without removal of ballast. Despite its low height of 95mm the jack is capable of a 101mm lift due to its hydraulic telescopic ram.

● Safe working load	10t on head
● Closed height	95mm
● Extended height	196mm
● Lifting stroke	101mm
● Weight of Jack	16.5kg
● Weight of Standard Lever	3.2kg
● Weight of Insulated Lever	2.5kg



Cat No. 39/37316
RB/BR/044

Slewing Jack - Type H Model CH65

This versatile Geismar jack is designed, by means of a removable slewing shoe, for slewing, aligning and lifting railway tracks, points and crossings. The jack is obstructionless to prevent traffic interruption, will slew up to 50mm, and is fitted with an overload safety valve.

● Lifting Capacity	5t on shoe 7t on head
● Lift on Shoe	160mm
● Lift per pump stroke	4mm on shoe
● Weight of Jack	24.5kg
● Weight of Shoe	3.5kg
● Weight of Standard Lever	2.2kg

Section 1 Hydraulic Track Jacks

Kenhi® Track Aligner Type J - Model SB7417

This obstructionless hydraulic jack is designed for the aligning and slewing of track, points and crossings.

The swivel head of the ram has been designed so that it can be positioned against the web of any rail including flat bottom rails as required.

- Safe working load 8t
- Stroke 152mm
- Weight of Jack 24.2kg
- Weight of Standard Lever 3.2kg
- Weight of Insulated Lever 2.5kg



Cat No. 39/00003
RB/BR/045

Simplex® Pow'r Claw Hydraulic Toe Jack Model TJ109S

The TJ109S Pow'r Claw Track Jack has been specifically designed to reduce the risk of operator injury, especially back injuries.

The hydraulic operation eliminates the risk of "kick-back" from lever bars if they are accidentally released.

- Safe working load 10t
- Lifting stroke 229mm
- Closed height 559mm head
57.2mm toe
- Max handle effort - full load 40.8kg
- Weight of Jack 26.3kg



RB/BR/068

Repair & Test

Arbil have been servicing rail equipment for almost 40 years.

That sort of experience, combined with an unrivalled stockholding of spare parts, historical records and technical information enables us to continue to maintain ageing product lines.

For example, products like the Kenhi A Type Toe Jack and the

F500 Slewing Jack are no longer available for sale, but are still found out in the field.

For further details of our comprehensive range of repair and test facilities, please refer to pages 59 & 60.



Section 1 Mechanical Track Jacks



Cat No. 39/39180
RB/BR/041B.

Duff Norton® Trip Jack Type F - Model 117 Steel

This Duff Norton steel bodied jack is of the suspended pawl type, eliminating the need for a separate tripping device. The upper (holding) pawl has a spring attached which automatically forces it into position. The lower (lifting) pawl is then free for tripping.

- Safe working load 15t on head
7.5t on toe
- Closed height 559mm head
50.8mm toe
- Lift height 330mm
- Weight of Jack 30.7kg
- Weight of Standard Lever 1.7kg
- Weight of Insulated Lever 3kg



Cat No. 39/39181
RB/BR/041A.

Duff Norton® Trip Jack Type F - Model 117A Aluminium

This aluminium lightweight version of the 117 shares the same dimensions, but has a de-rated safe working load of 7.5t on the head.

For further details on Duff Norton products please ask for our technical brochure.

- Safe working load 7.5t on head
7.5t on toe
- Closed height 559mm head
50.8mm toe
- Lift height 330mm
- Weight of Jack 22.5kg
- Weight of Standard Lever 1.7kg
- Weight of Insulated Lever 3kg



Cat No. 39/37287
RB/BR/042

Simplex® Aluminium Track Jacks

The Simplex range of 15t aluminium track jacks consists of three models: A5, A8 & A17 (FS).

The quick-trip mechanism allows track jacks to be instantly tripped while under load. Just engage the lifting pawl in the retaining pawl, and complete a down-stroke of the operating lever.

Simplex track jacks incorporate a rust proof tension spring, which maintains full engagement of the jack lifting and retaining pawls, so

that dependable operation is assured.

All Simplex track jacks have square sockets, designed for use with operating levers 1½" square x 66" long.

For further details on Simplex products please ask for our technical brochure.

Product Codes/Specifications

Jack Model No	Cat No	Product Code	Capacity	Closed Height		Stroke	Handle Effort Per Ton	Toe Lift Area	Weight
				Head	Toe				
A5	N/A	RB/BR/090	15 tons	280mm	50.8mm	133mm	33lbs	63.5 x 82.5mm	13.6kg
A8	N/A	RB/BR/091	15 tons	398mm	50.8mm	197mm	33lbs	63.5 x 82.5mm	16.8kg
A17 (FS)	39/37287	RB/BR/042	15 tons	575mm	50.8mm	330mm	33lbs	63.5 x 82.5mm	22.7kg

Section 1 Track Jack Operating Levers



Standard & Insulated Operating Levers

Large stocks of levers, handles and bars are manufactured to suit a range of British and overseas manufactured equipment.

Jack models include Kenhi, Geismar, Duff Norton, Simplex, Tange and Enerpac.

The range of levers for our range of hydraulic track jacks are manufactured from the following:

● High Quality Steel

Electro galvanised zinc plating ensures a quality finish and a long shelf life.

● Wood

Best quality ash specially selected for its fine and straight grain.

● Aluminium

Lightweight and rust proof.

● Fibre-Glass

These levers are specially designed for use with third rail requirements with high voltage resistance.

● Re-Tipping

A re-tipping service is available for both steel and insulated levers.

For further details on our products available for hire, please ask for our 36 page technical brochure.

Product Codes/Specifications

Ref	Cat No	Part No	Jack Type	Material	Std/Ins	Weight
①	39/01027	RB/BR/059	FS	Steel, Self Colour	Standard	13.0kg
②	39/30041	RB/BR/060	FS	Fibre Glass/Steel	Insulated	3.0kg
③	39/30005	RB/BR/057	F	Ash	Standard	1.7kg
④	39/30038	RB/BR/058	F	Fibre Glass/Aluminium	Insulated	3.0kg
⑤	39/37706	RB/BR/054	A, B, C, D, J	Steel, Zinc Plated	Standard	3.2kg
⑥	39/30015	RB/BR/055	A, B, C, D, J	Fibre Glass/Steel	Insulated	2.5kg
⑦	-	RB/BR/056	H	Steel, Zinc Plated	Standard	2.2kg

Section 2 Jacking Equipment



Hydrovic® Toe Jack

- 360° rotation of the toe through the body allows access to confined areas
- Horizontal or vertical operation
- 25mm toe height 5t & 10t
- 54mm toe height 25t
- Equal capacity on head/toe
- Pressure relief valve prevents overloading
- Leakage-free patented process
- 5t & 10t units are available with extended ballast base

Kenhi® Pillar Jack Model S1303 Hydraulic

This 13t single ram pillar jack is used in the maintenance of carriage and wagon rolling stock. The jack has a swivel top, locking collar and is fitted with an overload safety valve.

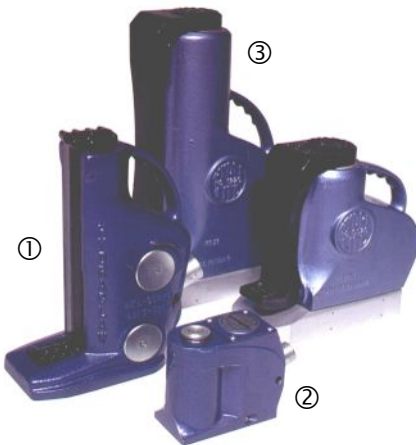
The jack has a closed height of 737mm and a stroke of 508mm.



**Cat No. 39/37305
RB/BR/065**

Hydrovic Product Codes & Specifications

Product Code	Cat No	WLL	Stroke	Closed Height		Stress on lever at Max	Weight
				At Base	On Head		
RB/BR/028	65/018035	5t	206mm	25mm	368mm	38kg	20kg
RB/BR/029	-	10T	233mm	25mm	413mm	40kg	29kg
RB/BR/030	-	25t	233mm	54mm	505mm	40kg	92kg



- ① **Hydraclaw**
**Cat No. 65/018050
RB/BR/046**
- ② **Hydramite**
**Cat No. 65/018049
RB/BR/067**
- ③ **Hydralite**
**Cat No. 65/018051
RB/BR/081**

Tangye® Hydraulic Jacks

① Hydraclaw® 5t Capacity

- Closed height - 330mm (head)
- Low Clearance - 41mm (toe height)
- Long Stroke - 175mm
- Fast Operation - 10mm lift per stroke
- Versatile - horizontal or vertical operation
- Safe - positive stop feature prevents over-stroking, pressure relief valve prevents overloading
- Robust Construction - can withstand rough treatment, ferrous construction has lead to its extensive use underground

② Hydramite® 6.5t Capacity

- Closed height - 129mm (head)
- Stroke - 82mm
- Safe - ram trip limits stroke,

pressure relief valve prevents overloading

- Reliable - totally enclosed and suitable for use in dusty conditions
- Versatile - operates in any orientation, swivel cap accommodates misalignment
- ③ **Hydralite® 40t Capacity**
 - Stroke - 18" (457mm)
 - Overload Protection - high pressure relief valve prevents loads in excess of the jacks capacity being lifted
 - Overstroke Protection - failsafe positive stop mechanism prevents overstroking

For further details on the full Tangye product range, ask for our 12 page technical catalogue.

Section 2 Jacking Equipment

Bottle Jacks

Yale universal bottle jacks supply high forces for general operations like lifting, pushing, moving and supporting of all types of loads.

For Arbil's full range of hydraulic workshop equipment, please refer to page 10.

Product Codes & Specifications

Model	Capacity	Stroke	Closed Height	Weight
JH4	4t	126mm	205mm	3.7kg
JH6	6t	130mm	219mm	4.7kg
JH8	8t	152mm	225mm	5.7kg
JH12	12t	153mm	240mm	8.0kg
JH20	20t	153mm	240mm	11.0kg
JH30	30t	180mm	280mm	22.0kg



Cable Drum Jack Sets

The cable reel jacks, with 3 optional lifting positions, are used in pairs for supporting cable

drums from 20" to 60" diameter. A firm jacking foundation is incorporated in a laminated hardwood base ensuring safe and reliable operation.

Product Codes & Specifications - per set

Product Code	Quantity	Cat No.	Description
RB/BR/035	2 per set	86/3204	Cable Drum Jack
RB/BR/035A	2 per set	86/3205	Operating lever (steel) for model 320A (86/3204)
RB/BR/035B	1 per set	86/3206	Steel spindle (side hooks) 2" dia for model 320A (86/3204)
RB/BR/035C	1 per set	86/3207	Steel spindle (top hooks) 2½" dia for model 320A (86/3204)



Capacity Per Pair
5 tons - Side Hooks (as illustrated)
10 tons - Top Hooks

Mechanical Rack Jacks

These mechanically operated wind-up jacks offer a cost effective method of jacking.

The continuous movement of both the head and toe, allows the jack to be used for the precise positioning of equipment.

Product Codes & Specifications

Product Code	Capacity	Closed Height		Stroke	Base Width	Base Length	Effort Required	Weight kg/each
		Head	Toe					
MRJ3	3t	753mm	70mm	265mm	130mm	138mm	350N	20
MRJ5	5t	780mm	80mm	295mm	140mm	170mm	100N	28
MRJ10	10t	800mm	100mm	400mm	140mm	170mm	580N	45



Hi-Lift® Jacks

The Hi-Lift Jack, a multi-purpose tool, is used in a wide range of industrial applications.

Renowned for its quality, strength and durability, the jack is available in either "all-cast" or a combination of cast and steel construction.

The jacks are available in 4ft and 5ft lifting heights, and have a rated load capacity of 2100kg,

each being proof load tested to 3175kg.

A range of accessories are available that allow the Hi-Lift Jack to carry out a variety of special tasks, such as winching and clamping.

For further details please ask for our 12 page Hi-Lift Jack brochure.



RB/BR/031

Section 3 Re-Railing Equipment



Re-railing Beams with Sliding Carriage

The photograph above shows our range of re-railing beams complete with sliding carriage, which are available in 1.1m, 2.25m, 3.25m & 4.5m lengths.

A typical re-railing kit will consist of

- Control desk
- Diesel powered pump
- 5 and 10m twined hoses
- Sliding carriage

- Single anchor
- 2.25m re-railing beam
- 1 x 12t traversing cylinder
- 1 x 60/30t telescopic cylinder, long stroke flanged
- 1 x 60/30t telescopic cylinder

For further details of our comprehensive range of repair and test facilities, please refer to pages 59 & 60.



Telescopic Jacks

- Lightweight aluminium alloy.
- Long and short stroke telescopic cylinders.
 - 120/60 tonne
 - 80/40 tonne
 - 60/30 tonne
 - 40/40 tonne
- Double acting seals on piston heads.
- Standard fail-safe holding valve fitted as standard.
- 20 tonne tilting jack available.
- 35 tonne long stroke/claw jack are available for vertical beam, rope ladder and claw jacking applications.
- Load spreading plates available.



The above re-railing equipment was fully overhauled by our comprehensive repair and test facility at Lye in the West Midlands

Section 4 Workshop Hydraulics

Enerpac® Hydraulic Maintenance Tools

A wide range of high force hydraulic tools is available to carry out many different tasks cost effectively.

All of the tools detailed in this section work on 10 000 psi (700 bar) working pressure and can be powered by hand pump, air pump or electric power pack, with a choice of electrical supplies.

- **Hydraulic Presses**

Available from 10t to 200t capacity in bench, workshop, and heavy duty formats. All models include cylinder, pump, hose and gauge, with optional single or double acting cylinders.

- **Pump & Cylinder Sets**

A massive range of cylinders with either single or double acting operation, solid or hollow ram is available in a variety of lifting heights.

- **Multi Purpose Puller Sets**

From 71kN to 445kN, to suit a variety of jobs.

- **Punches**

Punches holes up to 17.5mm diameter through a maximum steel thickness of 12.7mm.

- **Pipe Benders**

Maximum pipe capacity 15 - 100mm nominal pipe bore.

- **Maintenance Sets**

4 models up to 116kN capacity.



Hydraulic Presses



Pump & Cylinder Sets



Multi-Purpose Puller Sets



Hole Punch Kit



Pipe Bender Kit



Maintenance Set

Section 5 Track Tools - Manual

Permanent Way Hand Tools

Arbil Rail Centres carry an extensive range of hand tools including keying hammers, ballast shovels, Pandrol 'E' clip and Pandrol fast clip tools, track spanners, turning bars, shovels, folks, emergency clamps, rail tongs and sleeper nips to name but a few.

These can be supplied for sale or hire, with standard or insulated handles for third rail applications.

Extensive stocks of all tools as detailed in this section are carried at each location.

Contact your nearest depot with details of your requirements.

For further details on our products available for hire, please ask for our 36 page technical brochure.



Point Scrapers

Forged from best quality EN8 material, hardened and tempered for durability.

Standard features include synthetic handle and electro-zinc galvanised finish.



Cat No. 39/53365

RB/BR/002

- Weight - 0.75kg
- Standard Finish - Zinc plated
- Handle - Synthetic

Pad Scrapers

Manufactured from best quality EN8 material.

Standard features include synthetic handle and electro-zinc galvanised finish.



RB/BR/003

- Weight - 0.5kg
- Standard Finish - Zinc plated
- Handle - Synthetic

Section 5 Track Tools - Manual

Heavy Duty Pad Scraper

Manufactured from heavy gauge EN8 material. Standard black paint finish with synthetic handle for extra comfort.

- Weight - 1.5kg
- Standard Finish - Painted black
- Handle - Synthetic



RB/BR/004

Timber Sleeper Nips

Forged from Grade 43A steel to BS4360 with hardened and tempered points for greater strength and longer life.

Spray painted to customers requirements and fitted with a synthetic handle grip as standard.

Manufactured in accordance with current British Rail specifications.

- Weight - 4.7kg
- Standard Finish - Painted yellow
- Handle - Synthetic



Cat No. 39/68270

RB/BR/012

Concrete Sleeper Nips

Forged from Grade 43A steel to BS4360. Spray painted to customers requirements and fitted with wooden carrying handle as standard.

The tongs and nips detailed here are representative of a greater range whether manufactured for stock or to suit customers requirements.

Manufactured in accordance with current British Rail specifications.

- Weight - 9.1kg
- Standard Finish - Painted yellow
- Handle - Wood



Cat No. 39/68275

RB/BR/010

Rail Tongs

Forged from Grade 43A steel to BS4360 and designed to accommodate a range of rail sections.

Spray painted to your requirements and fitted with two synthetic hand grips offering non-slip facility.

Manufactured in accordance with current British Rail specifications.

- Weight - 6.8kg
- Standard Finish - Painted yellow
- Handle - Synthetic



Cat No. 39/68260

RB/BR/011

Section 5 Track Tools - Manual



Cat No. 39/1960
RB/BR/015

De-Clipping Bars

Manufactured from high grade hexagonal bar, both ends being hardened and tempered.

Designed by rail engineers for the fast and efficient removal of rail clips.

One site test have proved the equipment to be the most efficient hand method available.

- Weight - 8.4kg
- Standard Finish - Self colour
- Handle - None



RB/BR/020

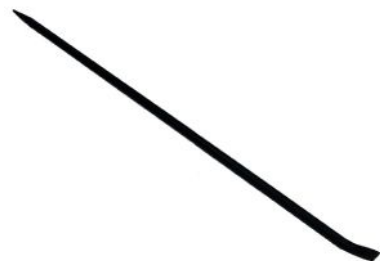
Rail Turning Bars

Forged from high tensile steel bar and spray painted to customer requirements.

Product Codes & Specifications

Product Code	Rail Type	Rail Section
RB/BR/020A	Bull Head	BS113A
RB/BR/020B	Flat Bottom	BS113A
RB/BR/020C	Flat Bottom	UIC60
RB/BR/020D	Flat Bottom	S49 & S54

- Weight - Bull Head 5.5kg
- Flat Bottom 4kg
- Standard Finish - Painted yellow
- Handle - None



RB/BR/094

Hexagonal Slewing Bars

Manufactured from 1" AF EN8 hexagonal bar x 60" long.

Heel and point one end, chisel and point at other.

- Weight - 6.5kg
- Standard Finish - Self Colour
- Handle - None



RB/BR/161 & 162

Ballast Shovels

High quality ballast shovels with square and tapered mouth. Available with either steel or hickory shaft with MYD handle.

Other handle styles including insulated available on request.

- Weight - 2.75kg
- Standard Finish - Painted black
- Handle - Steel RB/BR/161
- Hickory RB/BR/162

Section 5 Track Tools - Manual

Keying Hammers

Best quality bright faced keying hammers with genuine hickory shafts.

Two sizes available;

5½lb - RB/BR/163

10lb - RB/BR/164

- Weight - 5½lb
- 10lb
- Standard Finish - Painted black
- Handle - Hickory
- Handle Length - 5½lb 27½"
- 10lb 33½"



RB/BR/163 & 164

Sledge Hammers

Best quality bright faced sledge hammers with genuine hickory shafts.

Three sizes available;

7lb - RB/BR/165

10lb - RB/BR/166

14lb - RB/BR/167

- Weight - 7lb
- 10lb
- 14lb
- Standard Finish - Painted black
- Handle - Hickory



RB/BR/165 - 167

Fish Plate Spanner

Best quality all steel forged long handle open jaw Fish Plate Spanners 1 11/16" x 36" overall length for 1 5/8" square nuts.

1 15/16" model for 1 3/4" square nuts also available (RB/BR/075A).

- Weight - 4.5kg
- Standard Finish - Painted Black
- Handle - None



RB/BR/075

Fish Plate Nut Runner

Best quality all steel forged long handle open jaw Fish Plate Nut Runners 1 11/16" x 15" overall length for 1 5/8" square nuts.

1 15/16" model for 1 3/4" square nuts also available (RB/BR/076A).

- Weight - 2kg
- Standard Finish - Painted Black
- Handle - None



RB/BR/076

Section 5 Track Tools - Manual



RB/BR/077

Chair Bolt Spanner

Forged Box Spanner with 1 7/16" square socket for chair screw spikes.

- Weight - 6kg
- Standard Finish - Painted Black
- Handle - None



Cat No. 57/54006

RB/BR/005

Emergency G-Clamp

Drop forged and machined 'G' Clamps to effect emergency repairs in conjunction with joggled fish plates.

- Weight - 7kg
- Standard Finish - As forged

Repair service available.



Cat No. 57/54029

RB/BR/083

Joggled Fish Plates

Drop forged and machined Joggled Fish Plate (95 RBH Bull Head Single Plate) to effect emergency repairs on broken welded rail or fractured rail section.

- Weight - 12kg
- Standard Finish - As forged



Cat No. 57/054321

RB/BR/143

Temporary Rail Joint

Fabricated Temporary Rail Joint (TRJ) clamps, suitable for UIC60 or 113lb flat bottom rail only.

- Weight - 9kg
- Standard Finish - Painted Yellow

Replacement bolts Cat No. 57/150028 also available.

Section 6 Clip Fastening Tools

Pandrol Fastening Tools

A range of tools, for the Pansetter and Panpuller are available in either all steel or insulated for the installation and extraction of type 'E', 'P' and 'PR' series clips. All tools are painted gloss yellow.

Additionally, both side and under rollers are available for de-stressing operations, electro zinc plated for a longer working life. Please refer to page 16.

■ For further details on our products available for hire, please ask for our 36 page technical brochure.



Pansetter

Our Pansetter is specifically designed for the installation of Pandrol clips.

Supplied in spray painted finish and synthetic handle grips as standard.

All steel, not to be used for 3rd rail applications.

- Weight 6.5kg
- Standard Finish - Painted yellow
- Handle - Synthetic

Cat No. 39/042900
RB/BR/072



Panpuller

Our universal Panpuller is specifically designed for Pandrol brand type 'E', 'P' and 'PR' series clips.

Supplied in spray painted finish and synthetic handle grips as standard.

All steel, not to be used for 3rd rail applications.

- Weight 6.0kg
- Standard Finish - Painted yellow
- Handle - Synthetic

Cat No. 39/042748
RB/BR/070



Section 6 Clip Fastening Tools



Fastclip Sleeper Lifter F41/G44/EG47

Cat No. 50/001504

RB/BR/122

Suitable for all steel and concrete sleeper types.

Used in conjunction with the installation tool, the Sleeper Lifter assists in 'offering up' the sleeper/ rail seat to the rail.

- Weight 6.5kg
- Standard Finish - Painted Blue



Fastclip Installation Tool F41/G44/EG47

Cat No. 50/001502

RB/BR/123

Suitable for all steel and concrete sleeper types.

The installation tool has two functions, each achieved by simply re-positioning a moveable pin. With the pin passing through the rear hole of the claw,

installation of a Pandrol Fastclip assembly in the 'switched off' position is carried out.

When the pin is repositioned to the front hole of the claw and the installation operation repeated, the assembly will be in the 'switched on' position.

- Weight 7.3kg
- Standard Finish - Painted as table below



Fastclip Extraction Tool F41/G44/EG47

Cat No. 50/001503

RB/BR/124

Suitable for all steel and concrete sleeper types.

The extraction tool is used for side post insulator and clip/toe insulator replacement.

- Weight 7.1kg
- Standard Finish - Painted as table below

Note: New G44/EG47 tools will work satisfactorily on F41/EF36 sleepers. However, existing F41/EF36 tools are not suitable for G44/EG47 sleepers.

Tool Selection Chart

Sleeper Type	Installation Tool	Extraction Tool	Sleeper Lifter	Under Roller	Side Roller Field Side	Side Roller Gauge Side
F41/EF36	Yellow LP 12601 RB/BR/123A	Cream LP 12605 RB/BR/124A	Blue LP 12608 RB/BR/122	Yellow IP 10385 RB/BR/120	Yellow FC 1500L-40 RB/BR/121A	Yellow FC 1500L-40 RB/BR/121A
G44/EG47 With BS113A	Yellow with Green frame LP 15147 RB/BR/123B	Cream with Green frame LP15151 RB/BR/124B	Blue LP 12608 RB/BR/122	Yellow IP 10385 RB/BR/120	Cream with BLUE handle (to match blue insulator) FC 1500L-56 RB/BR/121B	Cream with BLACK handle (to match black insulator) FC 1500L-44 RB/BR/121D
G44/EG47 With UIC60	Yellow with Green frame LP 15147 RB/BR/123B	Cream with Green frame LP15151 RB/BR/124B	Blue LP 12608 RB/BR/122	Yellow IP 10385 RB/BR/120	Cream FC 1500L-52 RB/BR/121C	Cream FC 1500L-52 RB/BR/121E

Section 6 Clip Fastening Tools

De-stressing Rollers

A range of fast fitting rollers for de-stressing operations, suiting both G44 and EG47 sleepers fitted with either BS113A or UIC60 rail sections.

For further information on our range of de-stressing pumps and sets, please refer to page 24.

Tool Selection Chart

Sleeper Type	Under Roller	Side Roller Field Side	Side Roller Gauge Side
F41/EF36	Yellow IP 10385 RB/BR/120	Yellow FC 1500L-40 RB/BR/121A	Yellow FC 1500L-40 RB/BR/121A
G44/EG47 With BS113A	Yellow IP 10385 RB/BR/120	Cream with BLUE handle (to match blue insulator) FC 1500L-56 RB/BR/121B	Cream with BLACK handle (to match black insulator) FC 1500L-44 RB/BR/121D
G44/EG47 With UIC60	Yellow IP 10385 RB/BR/120	Cream FC 1500L-52 RB/BR/121C	Cream FC 1500L-52 RB/BR/121E

Fastclip Under Roller

Cat No. 50/001501

RB/BR/120

Sometimes referred to as a plate roller, the Fastclip under roller is suitable for all steel and concrete sleepers.

Capable of being fitted to the same sleeper at the same time as the side rollers, the under roller is inserted between the pad and the

rail, whilst the side roller is located on the forging shoulder.

- Weight 2.6kg
- Standard Finish - Painted as table opposite



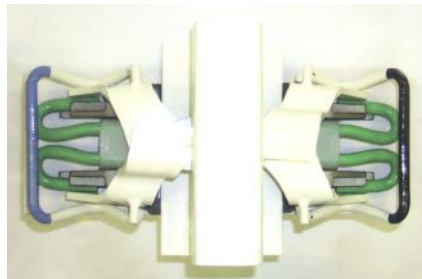
Fastclip Side Roller

Cat No. 50/001507

RB/BR/121

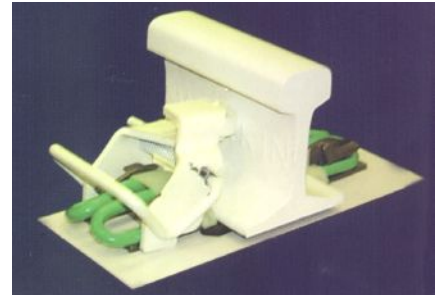
In the case of the side roller there is no need to remove the Fastclip as the design facilitates a secure wrap around fit onto the shoulder assembly.

- Weight 2.25kg
- Standard Finish - Painted as table



G44/EG47 Side Roller for use with BS 113A rail.

Black handled roller matches black insulator, blue handled roller matches blue insulator.



G44/EG47 Side Roller for use with UIC 60 rail.

Note: Both rollers are cream with cream handles.

E-Clip Side Roller

- Weight 1.4kg
- Standard Finish - Electro zinc plated

E-Clip Under Roller

- Weight 0.65kg
- Standard Finish - Electro zinc plated



E Clip Side Roller

RB/BR/073



E Clip Under Roller

RB/BR/074

Section 7 Railband® Rail Saws



Railband® 630 Illustrated



The Railband® Rail Saw

- **Railtrack Approved Certificate No. EL/12545/01/06 & 01**
- **Precise**
- **Fast**
- **Economical**
- **Low Cutting Costs**
- **Quiet Running**
- **Easy to Handle**
- **Comfortable to Operate**
- **Environmentally Friendly**
- **Choice of Models**
- **Choice of Power Source**
- **Optional Storage/Transportation Box**

Section 7 Railband® Rail Saws

The Railband® Range

Introducing two models, the 630 and 950 machines which are electrically operated 110-volt units (petrol powered option available), producing high precision cuts quickly and efficiently.

Originally developed for use underground, the Railband has been well received by rail organisations and contractors throughout Europe for use above ground.

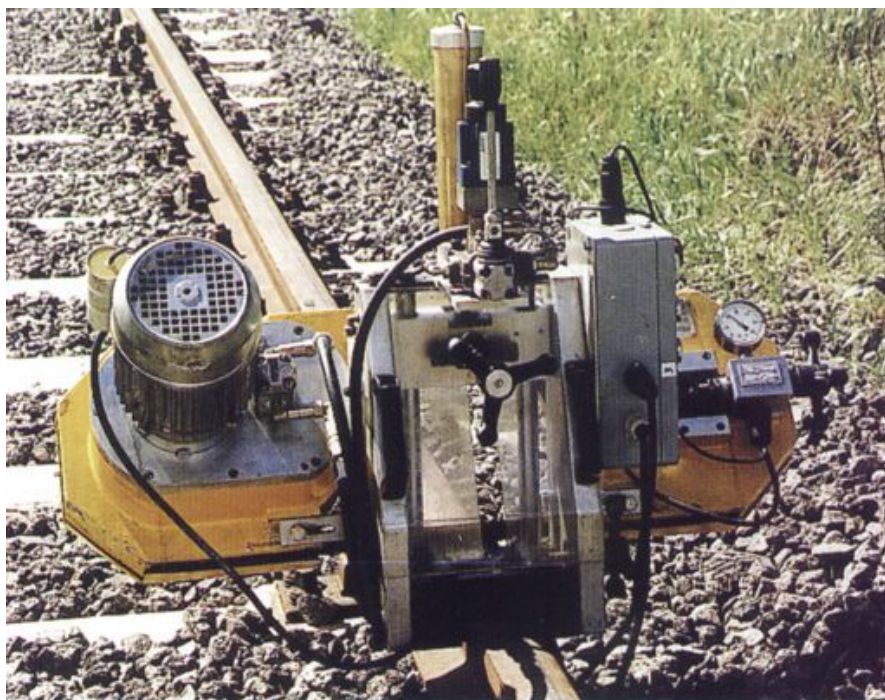
Whilst traditional methods of cutting rail remain prevalent today, there is little doubt that Railband will revolutionise this operation over a very short period of time.

Early indications show that the initial outlay is quickly recouped through greatly improved efficiencies.

The preparatory work prior to welding, for example, is significantly less, saving around 40-50 minutes per weld.

Additionally, the precise accuracy of Railband allows the rails to be butted up to one another, with the saw being able to take out the required section of rail to facilitate the welding process.

Furthermore, with the average life of a blade being around 20 cuts



Railband® 950 Illustrated

(experienced operators), the cost of consumables and change over time is also significantly reduced.

For further details on our products available for hire, please ask for our 36 page technical brochure.

Product Codes & Specification

Technical Data	Railband 630	Railband 950
Product Code	RB/BR/118	BR/BR/119
Width	630mm	950mm
Length	640mm	480mm
Height	558mm	620mm
Weight of clamping device	19 kg	20 kg
Weight of frame	37kg	28 kg
Cutting capacity in mm	150 x 180 H	150 x 200 H
Rail cutting capacity	e.g. 3141, 60 Uni etc.	e.g. 3141, 60 Uni etc.
Bandsaw blade dimensions	1800 x 27 x 0,9/0,8 mm	1965 x 27 x 0,9 mm
Bandsaw blade type	Bi-Band RIX-ASTROFLEX	Bi-Band RIX-ASTROFLEX
Bandsaw blade toothing	4/5 CHIP-Splitter	4/5 CHIP-Splitter
Cutting speed	40 m/min	40/60 or 80m/min
Bandsaw blade tension	35-40 bar	35-40 bar
Coolant tank	1 litre	1 litre
Motors	110 V/240 V	110 V/240 V



Section 8 Matweld® Hydraulic Tools



Weld Shear

Cat No. 65/029202
RB/BR/100

The Matweld Weld Shear is lightweight, efficient and gives effortless shearing of thermite welds in an average cycle time of 30-45 seconds.

With its integral hand pump, the unit is fully self contained. However, a simple conversion kit is available to enable powered

operation.

Cast stellite-tipped blades give extended wear life. Adjustable self-locking clamps ensure a clean, safe shear.



Profile Grinder

Cat No. 65/01247
RB/BR/101

The 02100 Profile Grinder is a precision grinding machine designed specifically for the finish grinding of field welds on all rail sizes.

The 12HP system provides maximum power to grind top and sides of rail head to the original

profile, at safe speeds.

All models are fitted with a spring activated safety cut-out bar.

- Flow 10gpm/38lpm max
- Pressure 2000psi/140bar
- Weight 49.4kg



Rail Saw - 16"

Cat No. 65/024026
RB/BR/102

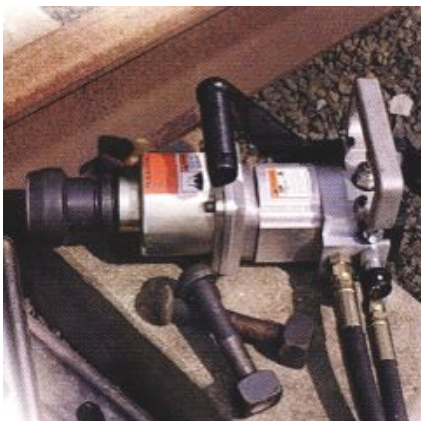
The Matweld Rail Saw, Model No 00800A, is a powerful hydraulic abrasive saw that uses a 14" or 16" blade to cut rail.

A sturdy pivot arm securely clamps to the rail and guides the saw during operation. Free axis movement of the tool allows

cutting on either side of the rail without turning the saw.

Clean, square separations average well under two minutes.

- Flow 10gpm/38lpm max
- Pressure 2000psi/140bar
- Weight 13.2kg (saw)
9.5kg (clamp)



Impact Wrench 1" Square Drive

Cat No. 65/044015
RB/BR/103

The Matweld Impact Wrench Model 01600A, is capable of handling the toughest of jobs.

Crossing, frog or track bolts are installed or removed in seconds. The unit is fitted with 'dial' torque

adjustments from 0-3500 ft/lbs. Additionally, allows the operator to stand upright.

- Flow 5gpm/19lpm max
- Back Pressure 150psi/10bar
- Weight 11.8kg

Section 8 Matweld® Hydraulic Tools

Rail Drill

Cat No. 65/024025
RB/BR/104

The Matweld Rail Drill is a robust tool yet weighs just 28.6kg. The units simple clamp and height adjustment mechanisms allow a quick set up.

A variety of rail template accessories allow the drill to operate on all sizes of rail (90-140lbs).

Standard flat spade bits are used and can be changed in seconds without the need for wrenches.

- Flow 5gpm/19lpm max
- Pressure 2000psi/140bar
- Weight 28.6kg



Straight Stone Grinder

Cat No. 65/01248
RB/BR/105

The Matweld Straight Stone Grinder is ideally used for grinding rail from thermite weld clean-up to grinding a radius on frogs.

The unit is fitted, as standard, with a safety trigger which prevents accidental operation of the tool.

- Flow 10gpm/38lpm max
- Pressure 2000psi/140bar
- Weight 6.8kg



Power Units

Matweld Power Units are available in a variety of configurations, from compact single tool (19lpm) petrol driven units through Electric to multi-tool Diesel 20 HP units, that can be rubber tyred or track mounted.

All are built to the same exacting standards as the tools they service, and provide power efficiently and cost effectively in extreme environments.

Product Codes & Specification

Product Code	Model No	Power Source	Circuit
RB/BR/106	02000	Petrol	Single
RB/BR/107	00100	Petrol	Dual
RB/BR/108	02900	Diesel	Dual
RB/BR/109	02900C (cat. con)	Diesel	Dual
RB/BR/110	02900M (MSHA cert)	Diesel	Dual
RB/BR/111	03700	Electric	Dual



Section 9 Track Tools - Powered



Rail Drill

RB/BR/112

Arbil's range of petrol driven LD-1P and electric driven LD-2E Cembre rail drills have been specifically designed for use in railway applications.

Compact in size, these drills afford considerable time savings by allowing direct operation in cases which previously have entailed armament removal.

Special twist drills can be used for hole diameters from 7mm to 22mm on rails up to 45mm in thickness and broach cutters for 13mm to 32mm hole diameters on rails up to 50mm thick.

Each model is provided with a coolant system consisting of a reservoir and pump which is connected via a quick release coupler arrangement.



Sleeper Drill

RB/BR/113

The Cembre SD-5P2 is extremely compact, practical and purposely designed for the drilling of wooden sleepers in complete safety. During operation the transmission of vibrations to the operator is reduced by a shock absorber between the drive shaft and spindle.

- Engine Two stroke petrol
- Displacement: 48.6cc
- Power: 1.9 HP / 1.4 kW
- Fuel: 4% mixture
- Starting: By rope pull
- Clutch: centrifugal
- Bit diameter range: up to 19mm
- Max. drilling thickness: 200mm
- Weight: 18kgs



Rail Saw

RB/BR/114

Efficient, easy to use 12" and 14" power cutters are essential for modern line production as they are for welded rail maintenance. An efficient rail cutter must be powerful, fast cutting and easy to use.

- Engine Two stroke petrol
- Engine Capacity 100cc
- Max Peripheral Speed 12" 80mps
14" 100mps
- Arbor Size 20/22/25.4mm
- Power Unit Weight 12" 16kg
14" 16.6kg
- Rail Arm Weight 11.4kg
- Transit Case Weight 8.9kg



Impact Wrench

RB/BR/115

Ideal for loosening/tightening all railway fasteners and using the safety quick release drilling attachment for drilling holes in timber.

Accessories

- Metal carry box
- Safety quick release drilling attachment

- Auger bits for hard and soft wood 10mm, 13mm, 16mm, 18mm and 19mm dia.
- Impact sockets - 1 1/8", 1 5/16" and 1 11/16" bi-square.
- Special and standard sockets, extensions, universal joints, spring clips, rubber rings and pins, two stroke oil and molybdenum disulphate grease.

Section 9 Track Tools - Powered

Nut Splitter & Walkpac®

The Enerpac Nut Splitter allows the easy removal of seized nuts during railway maintenance, and is just one example of the many applications that this piece of equipment can be used for.

Using the Enerpac Walkpac portable power pack, allows the user to take 700bar (10,000 PSI) of usable working pressure to the most inaccessible places. (Weight 8.6kg).

Simply charge the battery prior to use and you are able to power many of the smaller (622cm³ usable oil capacity) tools in the Enerpac range.

- Lightweight, integral battery for improved ergonomics and maximum portability
- Micro piston pump technology and direct drive for high efficiency and longer life
- Quiet and smooth operation



- plus ergonomics styling allows user to "wear" the pump
- Powerful 24v interchangeable battery pack for high performance and long life
- "Intelligent" battery charger provides fast 1 hour charge and complete battery conditioning for trouble free operation

Tamper/Breaker

RB/BR/116

The Cobra TT has been specially developed for tamping. An impact of 40 joules combined with a hammer speed of 1620 blows per minute means improved efficiency and drastically reduced ballast pulverisation.

Weighing only 24kgs the Cobra TT comes equipped with a new

dampening system that virtually eliminates vibration. The 90cc two-stroke petrol engine meets the toughest emission limit regulations.

Typical Applications

- Ballast Tamping
- Spiking wooden sleepers
- Digging cable trenches
- Concrete breaking



Pico Drill/Breaker

RB/BR/117

The petrol driven Pico 14 is the ideal tool for installation and repair work, drilling and breaking.

The Pico 14 requires no separate power packs, no cumbersome hydraulic or pneumatic hoses, or electric cables. Just pull the starter cord, and it will deliver a full hours work for just 0.75 litres of fuel.

● Engine	Two stroke petrol
● Engine Capacity	28 cc
● Blow Energy	16.4 J
● Drill Rotation	275 rpm
● Impact rate, drilling	2000 Blows/min
● Impact rate hammering	2200 Blows/min
● Drilling Cap, solid drills	16-50mm dia
● Tool Chuck	Kango & other Standards.
● Weight	14.4kg



Section 10 Small Plant



Petrol Generator

2.2kW to 6kW (2.7kVA to 7.5kVA) stackable frame petrol generator. 110 volt CTE (centre tapped to earth).

Fitted with anti-ballast plate and metal long run tank. Honda OHV oil alert engine.

For further details of our comprehensive range of repair and test facilities, please refer to pages 59 & 60.



Diesel Generator

5kVA (4.0kW) Lister Petter diesel engine complete with electric start and long run tank. 110 volts CTE (Centre Tapped to Earth).

Lifting handles are fitted as standard, wheel types are optional, either solid or pneumatic.



Audible Warning Device

Both 2 & 4 outlet model Audible Warning Devices are Railtrack approved and are available for use with petrol and diesel generators.



DC Welder

220 Amp DC Welder. Vanguard OHV V twin petrol engine. 110 volt 2.7kVA auxiliary output.

For further details on our products available for hire, please ask for our 36 page technical brochure.

Section 11 De-Stressing Equipment

De-Stressing Equipment

Both full and half stressing kits are available for both sale and hire with lightweight stressor powerpacks. They provide control for accurate stressing of continuous welded rail in all weather conditions and are also available with insulated tie rods and extended rods for multiple welding if required.

The hydraulic rail tensors are designed to operate by pulling the required elongation of continuous welded rail necessary for in-track welding.

- A hydraulic pump operated either manually or by petrol power pack
- Two double-acting hydraulic cylinders
- Two clamps to grip the rail
- Two pulling rods
- High pressure flexible hoses



Full set of De-Stressing Equipment in-situ

De-Stressing Pumps

Cat No. 65/029238
RB/BR/099

Designed specifically for the rail industry, this petrol engine driven power pack is used for rail de-stressing operations. The well proven unit comprises of the SPX Power Team PG18 series pump powered by a Honda 4 stroke engine which is all fitted within an easily handled roll cage.

The two control valves are 4 way 3 position manual valves with SPX Power Team "POSI-CHECK" feature, allowing the operator to switch off the pump whilst holding the load without any system pressure loss.

The Compact Unit has a dual valve system which allows the operator to stress two half tracks simultaneously. The unit also has a built in hand operated pump for backup for any possible engine failure, thus enabling the operator to complete the job.

- Single operating handle feature (cannot be removed without returning to centre position).
- High visibility gauge position
- 2.5 HP motor (3450 RPM)
- Relief valve setting - 8700psi
- Low Pressure relief - 750psi
- Flow Rate - Low pressure 375 cu/ins @ 200psi
High pressure 33 cu/ins @ 8700psi
- Usable Oil - Power Pack 3.2 gallons, Hand Pump 2.4 gallons
- Weight 55kgs



Pump Product Codes

Description	Product Code	Cat No
Power Pack	RB/BR/099	65/029238
Double Hose Set	RB/BR/099H	65/029240

For further information on our range of de-stressing rollers, please refer to page 18.

Section 12 Overhead Line Equipment



The Range

Arbil Rail Centres, supply, hire and repair a wide variety of certified lifting, pulling, tensioning and measuring equipment that is

used by overhead line construction and maintenance teams.

Product Listing

- Bowthorpe Clamps & Wedges
- Cable Drum Jacks
- Cable Rollers
- Come-Along Clamps
- Dynamometers
- Ground Anchors
- Lever Hoists
- Multi-leg Wire Rope Slings
- Rope Blocks
- Roundslings
- Running Out Blocks
- Safety Harnesses
- Steel Wire Rope
- Shackles
- Snatch Blocks
- Tirfor Winches
- Turnbuckles & Lashings

Bowthorpe® Clamp & Wedge

The range of Bowthorpe clamps and wedges, manufactured from high strength aluminium alloy (steel screws hot dip galvanized to DIN 50976) have been developed to tension conductor wires on overhead catenary systems.

Consisting of a range of dedicated wedges, body clamp and a double leg wire rope sling, this equipment is used in conjunction with a Lever Hoist and a Dynamometer to pull up the conductor wires to the required tension.

The range of wedges cater for

copper, steel and aluminium conductor wires from 9mm to 22.5mm diameter.

Product Codes/Specifications

Part No	BR Ref	Description	Wire Diameter	Working Load	Conductor Wire Material
K-438-158-001-F	-	Clamp Body	9.0 - 24.5mm	300kN	-
K-406-594-594-F	A	Pair of Wedges	9.0 - 10.7mm	90kN	Copper or Steel
K-406-594-595-F	B	Pair of Wedges	10.8 - 12.5mm	90kN	Copper or Steel
K-406-594-597-f	C	Pair of Wedges	14.4 - 16.1mm	90kN	Copper or Steel
K-406-598-602-F	D	Pair of Wedges	16.2 - 18.2mm	90kN	Aluminium
K-406-598-604-F	E	Pair of Wedges	20.5 - 22.5mm	90kN	Aluminium
K-406-594-003-F	F	Pair of Wedges	18.3 - 20.4mm	160kN	Copper or Steel
K-406-598-598-F	AS	Pair of Wedges	9.0 - 10.7mm	90kN	Aluminium
K-406-598-599-F	AL	Pair of Wedges	10.8 - 12.5mm	90kN	Copper or Steel



Section 12 Overhead Line Equipment

Bowthorpe® Pulling Sling

RB/BR/125

Manufactured from a single length of 14mm dia. 6x36 IWRC galvanised steel wire rope.

This two leg sling is fitted with a reeving thimble at one end, with each leg terminating in a small soft loop to locate onto the side lugs of the clamp body.

- Working Load Limit 44kN
- Effective working length 0.75m
- Weight 2.7kg



Yale® PT Lever Hoist

The PT is a competitively priced, light weight ratchet lever hoist. The standard free chaining device

allows the user to quickly attach the load and pull the chain through the hoist in either direction.

Product Codes & Specifications

Capacity	Falls of Load Chain	Std Lift (metres)	Min Distance Between hooks (mm)	Std Weight
0.75t	Single Fall	1.5	295	5.7kg
1.5t	Single Fall	1.5	380	9.3kg
3.0t	Single Fall	1.5	420	14.9kg



Yale® D95 Pul-Lift®

The D95 has taken its technical features from the proven D85, but excels in its cast malleable iron design due to low tear weight and an extremely small measurement

between suspension and load hooks.

For further information on Yale products, please refer to page 55.

Product Codes & Specifications

Capacity	Falls of Load Chain	Std Lift (metres)	Min Distance Between hooks (mm)	Std Weight
1.5t	Single Fall	1.5	314	9.9kg
3.0t	Single Fall	1.5	376	16.5kg



Tirfor® Pulling Machines

Available in either the standard T5 range or heavy duty TU range, these lifting and pulling machines offer an unlimited amount of travel.

Hydraulic and pneumatic powered versions are also available, for further information ask for our 36 page technical brochure.

Product Codes & Specifications

Model No	Nominal Cap Kg	Rope Diameter	Weight Kg
T508	800	8.2	6.6
T516	1600	11.3	13.5
T532	3200	16.3	24.0
TU8	800	8.2	8.4
TU16	1600	11.3	18.0
TU32	3200	16.3	27.0



Section 12 Overhead Line Equipment



Tension Measurement

During line construction it is important to control the 'installed tension' of conductor cables according to type and conditions.

For field work, light and robust equipment is especially important.

Detailed below, are three examples of equipment that can measure the force in steel cables.

Both the Dynafor and Piab

Dynamometer measure the tension during construction, whereas the Dynarope can measure existing pre-tensioned cables.



Dynafor® Load Link

Manufactured from high strength aluminium alloy and using state of the art electronics, gives the user a lightweight and compact unit.

The Dynafor is designed to use standard US Federal Spec. Bow Shackles at each end.

The Dynafor gives an instant and constant digital display of the load applied with tear, peak and units measured.



Dynarope®

Dynarope HF series tensiometers are designed to provide a quick and simple method of measuring the load or force in pre-tensioned steel wire ropes. The Dynarope is quick and simple to use and can be mounted at any position along the pre-tensioned rope.

Dynaropes are used extensively to check the tensioned ropes of aerials, pylons, masts, supports

and catenaries in the railway, communication and construction industries.

Dynarope can be supplied for ropes of a greater diameter than 22mm.



Piab® Dynamometer

The Piab Dynamometer is an all weather instrument and is highly suited for use in the field for weighing and measuring mechanical forces.

With a factor of safety of 5:1, the Piab unit is most robust and is guaranteed to withstand a load of 5 times the full scale reading before rupture.

In addition to this, the Dynamometer may be overloaded by 100% without impairing the accuracy.

The Piab Dynamometer is fully pressure tight and each instrument is pressure tested, where no leakage is permitted.

All units are zinc plated with clear chromate passivation.

Section 12 Overhead Line Equipment

Height Safety

The single biggest risk to life and safety of people working in the construction industry is falling from height. It is the responsibility of the employer to ensure that all employees are properly protected - legislation insists upon it.

To meet this need, Arbil Rail Centres offer a wide range of temporary and permanent personal fall arrest equipment to suit a wide variety of working

The Range Includes

- Rigger's Harnesses
- Linesmen's Harnesses
- Safety Belts
- Webbing/Rope Lanyards
- Retractable Lanyards
- Restraint Lanyards
- Pole Straps
- Rope Lifelines
- Rope Grabs
- Rope Adjusters
- Connectors
- Karabiners
- Snap Hooks
- Scaffold Hooks
- Anchorages
- Beam Clamps
- Retractable Lifelines



Single Point Full Body Harness - AB 10 WP

With chest and leg adjustment fitted with rear 'D' attachment point for fall arrest protection (EN 361).

Incorporates a fully adjustable work positioning belt with lumbar support, which with a pole strap allows hands free working at height (EN 358).



Double Point Full Body Harness - AB 20 WP

With chest and leg adjustment fitted with rear 'D' attachment point for fall arrest protection and front chest 'D' is ideal for evacuation or fixed ladder safety rail systems (EN 361).

Incorporates a fully adjustable work positioning belt with lumbar support, which with a pole strap allows hands free working at height (EN 358).



Safety Harness Accessories

In addition to our range of safety harnesses, the high visibility jacket allows the wearer to be seen at distance, as required by Railtrack, still allowing full access to the attachment points for inspection and cleaning.

Accessories include; Lanyards, Fall Arrest Blocks, Shoulder Pads, Tool Belts & Connectors.

Section 13 Rail Handling Equipment

Rail Handling Beams

Rail handling beams are available for handling 30, 45 and 60 ft long rail sections.

These beams can be fitted with the various types of rail clamps detailed in this section, or can be used with webbing slings as shown in the picture to the left.

All beams are manufactured with a centre lifting eye as standard.

In addition to this they are also fitted with lifting lugs at each end for use with a double leg sling.

The lower lifting lugs are designed to accommodate the Kuplex KDN10N narrow jaw shackle that is fitted to the CR range of Camlok rail lifting clamps as detailed below.



Product Codes & Specifications

Product Code	Cat No.	Capacity	Beam Length	Rail Length
RB/BR/211	-	1.0t	4.0m	Up to 30 Feet
RB/BR/210	65-002080	1.5t	7.5m	Up to 60 feet



CR750 Rail Clamp Illustrated

Camlok Rail Lifting Clamps - Type CR

These clamps are designed to lift most sizes of rail now in use in the UK. The clamp is either fitted with a hook ring for direct connection to the crane, or with a plate link for fitment with a short chain assembly. This Kuplex assembly generally consists of a KSS10N egg link, 7 links of chain and a KDN10N narrow jaw shackle (as pictured opposite).

Product Codes & Specifications

Product Code	Model	WLL	Weight
RB/BR/300	CR750	1t	13kg
RB/BR/301	CR21	2t	13kg

When using more than one clamp to lift the same load make sure that the load is always balanced.

Multi-Rail Lifting Clamps Type MR

These clamps facilitate the fast bulk transfer of rail sections from rail stacks to wagons, retaining the rails rigidly in a flange to flange position.

The clamps are normally used in pairs and have automatic double safety locks and hard rubber linings preventing damage to the rail head.

Product Codes & Specifications

Product Code	Model	Rails	WLL	Weight
RB/BR/302	MR3	3	5t	84kg
RB/BR/303	MR4	4	5t	108kg
RB/BR/304	MR5	5	5t	132kg
RB/BR/305	MR6	6	6t	156kg
RB/BR/306	MR7	7	7t	180kg
RB/BR/307	MR8	8	8t	204kg
RB/BR/308	MR10	10	10t	252kg
RB/BR/309	MR12	12	12t	300kg

Section 13 Rail Handling Equipment

Automatic Rail Clamps

Available in three capacities, these clamps are designed to locate directly on to the crane hook, or they can be modified to suit individual requirements.

The failsafe auto-indexing pin manufactured from high tensile hardened steel, forms the operational heart of the clamp. Its design allows the operator to open and close the clamp

Product Codes & Specifications

Product Code	Cat No.	Model
RB/BR/017	65/004189	1000kg
RB/BR/018	65/004190	2000kg
RB/BR/019	65/004191	3000kg

remotely and automatically, providing both safe and efficient loading of rail.

All models are supplied in an electro-galvanised zinc plated finish.



Drag Clamps

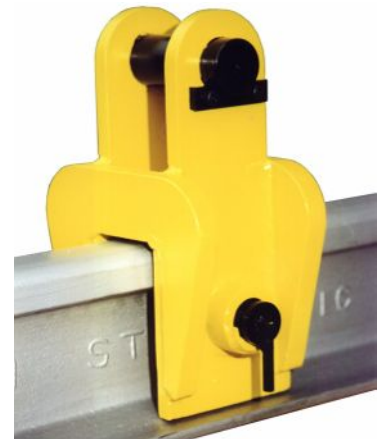
RB/BR/097

The 10 tonne drag clamp is for fitting over the head of the rail, and is a means of dragging or pulling lengths of rail up to 600 ft long safely.

The clamp is suitable for 113A and UIC60 rails.

The clamp is used with various formats of tow chains and ropes,

the most popular being a 4m long, 13mm grade 8, twin chain sling with large master link at each end (minimum breaking load 42.4 tonnes).



Ironman

RB/BR/089

For transporting, lifting and transposing rail, the Ironman is generally used in pairs.

The standard model is fitted with a 1.5 ton Yale D85 Pul-Lift and a CR750 Camlok rail clamp.

Each unit requires two persons for assembly and is easily dismantled for storage and transportation.

Rail Scooter

RB/BR/096

For transporting rail, the Rail Scooter has to be used in pairs, with each individual unit being operated by a single person.

The standard model is fitted with a short shackle and chain assembly terminating in a CR750 Camlok rail clamp.



■ We now have a large fleet of IronMen available for Hire. For further details on our products available for hire, please ask for our 36 page technical brochure.

**Now
Available
for Hire**

Section 13 Rail Handling Equipment



Rail Thimble MK3

Cat No. 65/03833 - 36

- Working load limit 3.0t on lifting points of vertical roller pins.
- All units fully tested and certified.
- All wearing parts fully heat treated
- Improved design of tapered roller pins for ease of replacement.
- Hydraulic cylinder fitted as standard with safety valve in case of hose failure.
- Fits 113A-150 & UIC60 rail Sections.
- Interchangeable between 113A and UIC60 Rail by means of adjusting vertical rollers.
- Hydraulic models suitable for the majority of hydraulic systems on road rail machines.
- All moving part have lubrication points.
- Four standard models available with fixed or swivel eye, manual or hydraulic operated.
- Additional features available to suit customers requirements.

Arbil's original new generation of Rail Thimbles was redesigned in conjunction with British Rail and introduced some 10 years ago. During this time it has been used extensively in the field, both in the UK and overseas.

The latest Mark 3 version was launched in 2000 and suits 113A, UIC60 and Bull Head Rail sections. The MK3 is used extensively with road rail machines and long welded rail trains.

Product Codes & Specifications

Cat No.	Part No	Eye Type	Operation	Weight
65/03833	RB/BR/50B	Fixed Eye	Manual	118kg
65/03835	RB/BR/51B	Fixed Eye	Hydraulic	118kg
65/03834	RB/BR/52B	Swivel	Manual	120kg
65/03836	RB/BR/53B	Swivel	Hydraulic	120kg



As with the vast majority of our equipment, Rail Thimbles are readily available for hire. For further details on our products available for hire, please ask for our 36 page technical brochure.

Section 13 Rail Handling Equipment

Rail Handling Beams

The Rail Handling Beam is designed to lift 18m/60ft lengths of any section of rail.

The beam can be fitted to any type of Excavator, Road Rail Loader or Crane.

The beam consists of 2 sets of hydraulic clamps mounted on a robust steel frame. It is fitted with a security valve system which ensures the clamps do not open when the load is lifted.

A 360° heavy-duty rotator is fitted as standard on all of our beams.



**Now
Available
for Hire**

Product Codes & Specifications

Product Code	Cat No.	Model
RB/BR/209	-	1250kg

- Safe Working Load - 1250kg
- Overall Height - 0.75m (with Rotator)
- Operating Pressure - 150 bar max
- Weight - 210kgs
- Overall Length - 1.3m
- Overall Width - 0.3m

For further details on our products available for hire, please ask for our 36 page technical brochure.

Section 14 Sleeper Handling Equipment



Sleeper Handling Equipment

As with rail handling equipment, Arbil's 40 years experience of lifting and material handling has led to the design and total manufacture of many variants of sleeper handling equipment.

Ranging from simple chain assemblies to lift 1 or 2 sleepers, through to more complex 28 sleeper relaying beams, Arbil Rail Centres have a standard range available to meet the most common requirements.

This section provides a brief overview of Arbil's design and manufacturing capabilities, and also details the most popular range of beams, dropper chains and terminal lifting components that suit the varying types of sleeper fastening systems.

Pictured right. 3 No. 28 sleeper lifting beams fitted with Fastclip lifting plates.



Sleeper Lifting Beams

Sleeper lifting beams are available in various styles with either fixed or adjustable centres, allowing for the differing sleeper spacings.

Additionally, depending on the type of beam, a wide variety of dropper chain configurations and sleeper hooks including; Pandrol 'E' Clip, Pandrol F40, SHC and Fastclip are available.

In addition to this, some of our larger beams have optional lifting bales fitted for the handling of track panels.

If you have a special requirement, please contact one of our Rail Centres to discuss your needs with one of our technical staff.

Section 14 Sleeper Handling Equipment



Inset shows a 7 sleeper lifting beam used to lay 3 sleepers.

Sleeper Beam Dropper Chains

Various types of dropper chains are available fitted with any of the sleeper hooks or attachments detailed on the page opposite.

These chains utilise various components from both the Kuplex and our own System8 ranges as detailed below.



Individual part numbers for the components used are as follows:

- KHN7L - Kuplex sling hook complete with safety catch
- KDN7N - Kuplex narrow jaw shackle
- K7N - Kuplex kupler
- KSS7N - Kuplex reevable egg link
- TSH7/8 - System8 sling hook complete with safety catch.

Product Codes & Specifications

Product Code	End Fittings	Chain length
RB/BR/800	Hook & Catch/Shackle	5 Links
RB/BR/801	Hook & Catch/Shackle	7 Links
RB/BR/802	Hook & Catch/Shackle	26 Links
RB/BR/803	Hook & Catch/Shackle	32 Links
RB/BR/804	Hook & Catch/Shackle	34 Links
RB/BR/805	Kupler/Shackle	5 Links
RB/BR/806	Kupler/Shackle	9 Links
RB/BR/807	Egg Link/Shackle	5 Links
RB/BR/808	Egg Link/Shackle	7 Links
RB/BR/809	Shackle/Shackle	8 Links
RB/BR/810	Shackle/Shackle	10 Links
RB/BR/811	Shackle/Shackle	12 Links
RB/BR/812	Shackle/Shackle	32 Links

For further information on our range Kuplex chain and components please ask for our 28 page technical catalogue.

Sleeper Lifting Beams - The Standard Range

The table below details our standard range of sleeper lifting beams, which are configured for loading, with dropper chains fitted at half sleeper spacings, i.e. 350mm (28 sleepers per 60ft length).

Given this, sleeper loading beams with an odd number of droppers (3, 5, & 7) can be used for laying, utilising alternate dropper chain assemblies.

For example, a 7 sleeper loading beam can be used to lay either 3 or 4 sleepers at a time.

Lifting Beam Product Codes

Description	Cat No	Prod. Code
3 Sleeper - RSC	65/002074	RB/BR/200A
3 Sleeper - RHS	65/002075	RB/BR/201A
4 Sleeper - RHS	65/002076	RB/BR/202A
5 Sleeper - RHS	65/002077	RB/BR/204A
7 Sleeper - RHS	65/002078	RB/BR/205A
7 Sleeper - ADJ	-	RB/BR/205B
8 Sleeper - RHS	65/002079	RB/BR/203A

When ordering beams for laying purposes, please advise us of your spacing requirements. Should you have multiple spacing requirements, Arbil Rail Centres have developed adjustable beams, please call to discuss your specific needs.

All beams are fitted with a centre lifting eye and top double leg chain sling as standard. Steering eyes can be fitted to the end of each beam if required.



Section 14 Sleeper Handling Equipment



Sleeper Spacer Gauges RB/BR/198 & 199

Used in conjunction with sleeper laying beams, the sleeper spacer gauge is a means of checking the spacings between the sleepers during the laying operation.

The sleeper spacer gauges are adjustable and available for most of the standard sleeper profiles, and are colour coded as per the table opposite.

The illustration shows a 4 sleeper gauge, a 6 sleeper version is also available.

Sleeper Spacing Colour Codes

No. of Sleepers per 60ft length	Colour Code	Spacing
30	Black	610mm
28	Blue	653mm
26	Green	703mm
24	Orange	762mm



Sleeper Lifting Hook - Pandrol Clip

Cat No. 31/110010 & 15 RB/BR/007

Tests have shown a staggering 12 to 1 safety factor (based on 350kg SWL). Left and right hand versions are available as well as special 'short leg' hooks for use with low headroom beams and a specially extended leg version.

All supplied galvanised as standard.

Product Codes & Specifications

Product Code	Description	Cat No.
RB/BR/007A	Right Hand	31/110010
RB/BR/007B	Left Hand	31/110015
RB/BR/007C	Shortened Leg	-
RB/BR/007D	Extended leg	-



Fastclip Handling Hook

Cat No. 50/001505 RB/BR/080

The fastclip handling/plate hook has been developed for fast insertion on both F41 and G44 fittings.

All hooks are drilled to accommodate the Kuplex KDN7N narrow jaw shackle, are black power coated as standard and

can be fitted with locating or steering handles when requested.

Each hook has a Working Load Limit (WLL) of 400kg on pair at 90° and is proof load tested to twice this load.

We also manufacture sleeper lift plates for the Double Fastclip Sleepers and PN 60 chairs.



SHC Hooks



Bull Head Stirrup Hooks

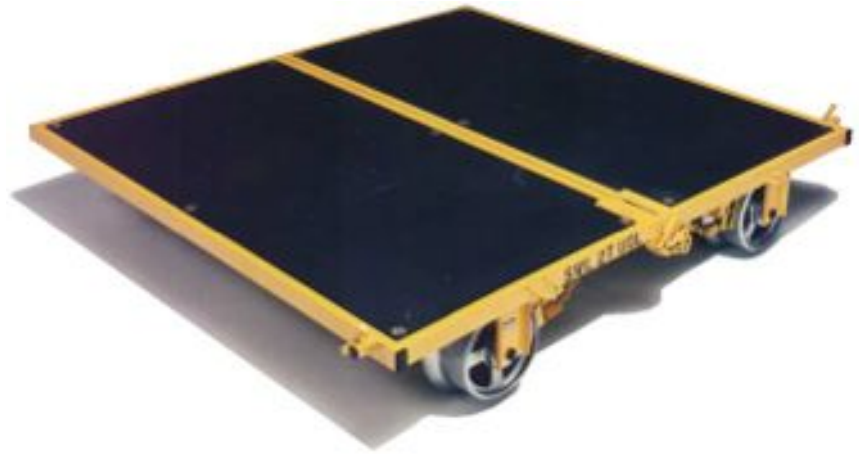


Sleeper Lifters

Section 15 Lifting & Shifting

Trolleys

These standard weight trolleys, complete with fail-safe brakes, are for moving all types of materials and equipment on track.



Note: London Underground approved version with insulated wheels and alloy top

● Model No 27788

Type A Trolley - Single

Cat No. 68/19192

RB/BR/150

- Capacity 2000kg
- Length 1220mm
- Width 1685mm
- Height 304mm
- Model No 23716
- Weight 90kgs



Note: London Underground approved version with insulated wheels and alloy top

● Model No 27791

Type B Trolley - Double

Cat No. 68/19193

RB/BR/151

- Capacity 2000kg
- Length 1825mm
- Width 1685mm
- Height 304mm
- Model No 24681
- Weight 130kg



Note: London Underground approved version with insulated wheels and alloy top

● Model No 28800

Link Trolley

Cat No. 68/19194

RB/BR/152

- Capacity 1250kg
- Length 750mm
- Width 1675mm
- Height 218mm
- Model No 28455
- Weight 47kgs



Section 15 Lifting & Shifting



Rail Skates

● Weight (Skate Board) 16kg

RB/BR/153

● Weight (Skate) 5.4kg

A simple method for transporting items along the track, either used individually or in pairs.

When two skates are linked together, clip-on attachments can be fitted to increase the carrying capacity.

Skates are available with non-stoop, ergonomically designed, handles for improved user comfort.



Hand Pallet Truck

A 'no nonsense' robust and reliable 2.5 ton pallet truck.

- Ergonomically designed handle and lever
- Torsion-resistant pressed steel construction for rigidity

- Euro pallet compatible
- Maintenance-free wheel bearings

Product Codes & Specifications

Model	Capacity	Overall Width	Fork dimensions
Hu Profi 25T	2.5 tons	520mm	51 x 150 x 1150mm
Hu Profi 25TX	2.5 tons	686mm	51 x 150 x 1150mm

Steerman® Load Moving Systems

This universal heavy load moving system loads up to 100 tonnes.

Manufactured in the UK to the highest specification, Steerman load moving systems unique design characteristics gives the user total control and maximum stability.

■ For further details on our products available for hire, please ask for our 36 page technical brochure.



Model S5 Illustrated

Product Codes & Specifications

Model	Capacity	Total No. of Wheels	Overall Height	Net Weight
S5	5t	16 @ 82 dia mm	97mm	57kg
S10	10t	24 @ 82 dia mm	97mm	66kg
S15	15t	32 @ 82 dia mm	97mm	78kg
S20	20t	40 @ 82 dia mm	118mm	110kg
S25	25t	48 @ 82 dia mm	118mm	158kg
S30	30t	48 @ 82 dia mm	118mm	158kg
S40	40t	48 @ 82 dia mm	165mm	305kg
S60	60t	48 @ 82 dia mm	165mm	305kg
S80	80t	48 @ 82 dia mm	208mm	518kg
S100	100t	48 @ 82 dia mm	208mm	518kg

ARBIL Rail Equipment proudly distributed in
Australia by:

LB Wire Ropes Pty Ltd

3 Amax Avenue
Girraween, NSW 2145
P: (02) 9631 8833
F: (02) 9688 4503
E: sales@lbwireropes.com.au
W: www.lbwireropes.com.au

ARBIL Rail Equipment is manufactured
in accordance with ISO 9001:2000

